

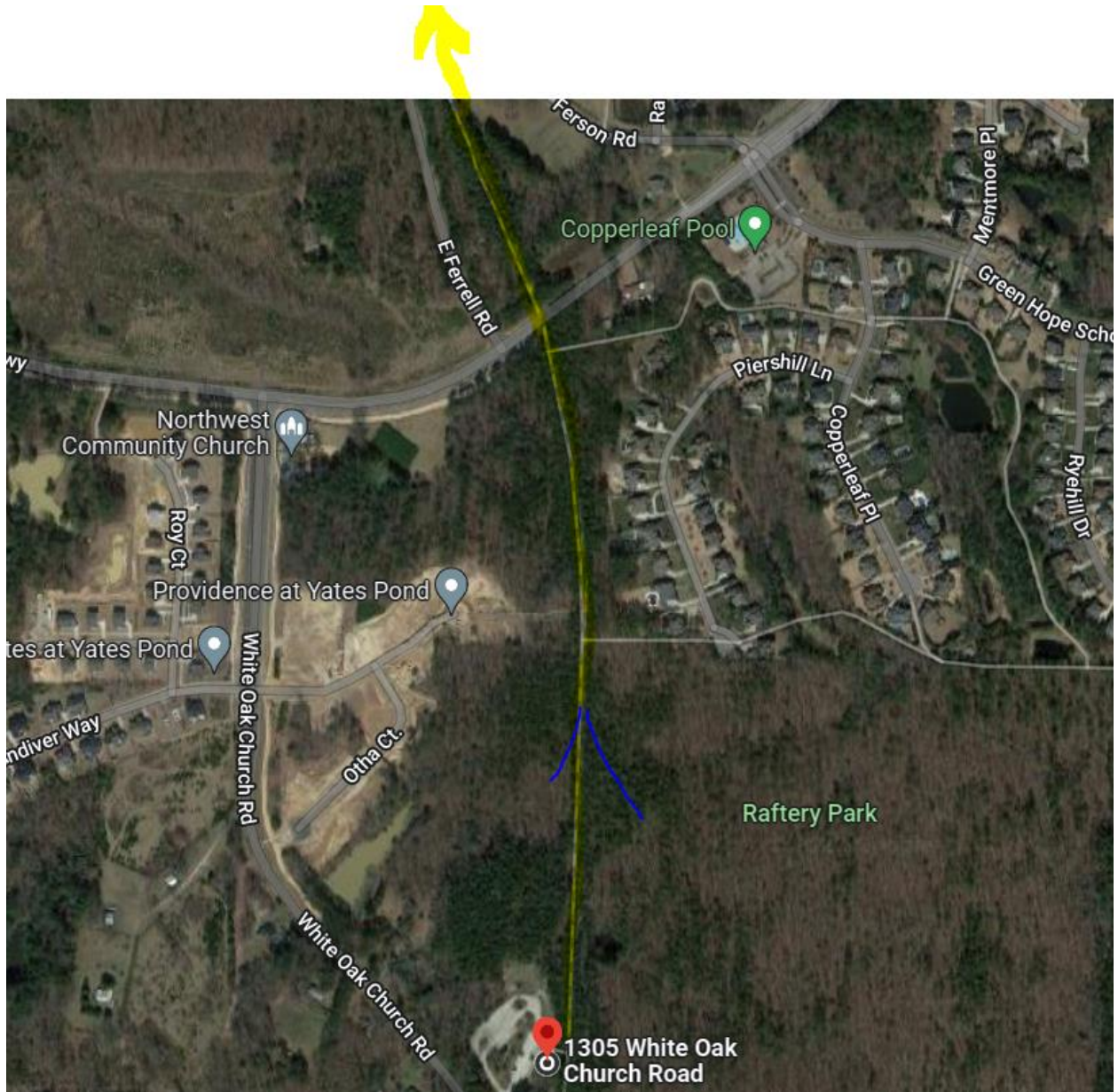
AMERICAN Tobacco Trail

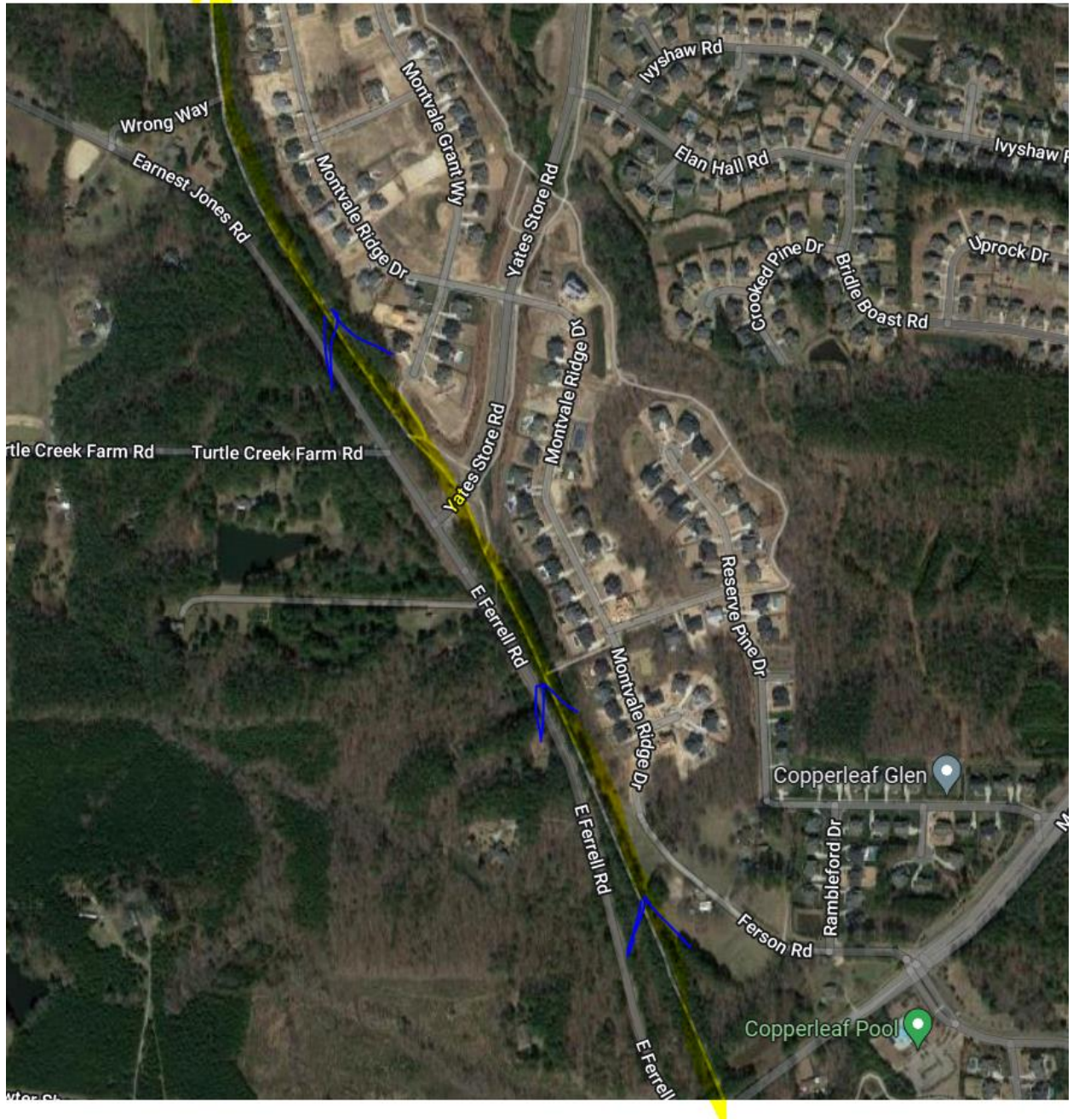
Address: 1305 White Oak Church Rd, Apex NC 27523

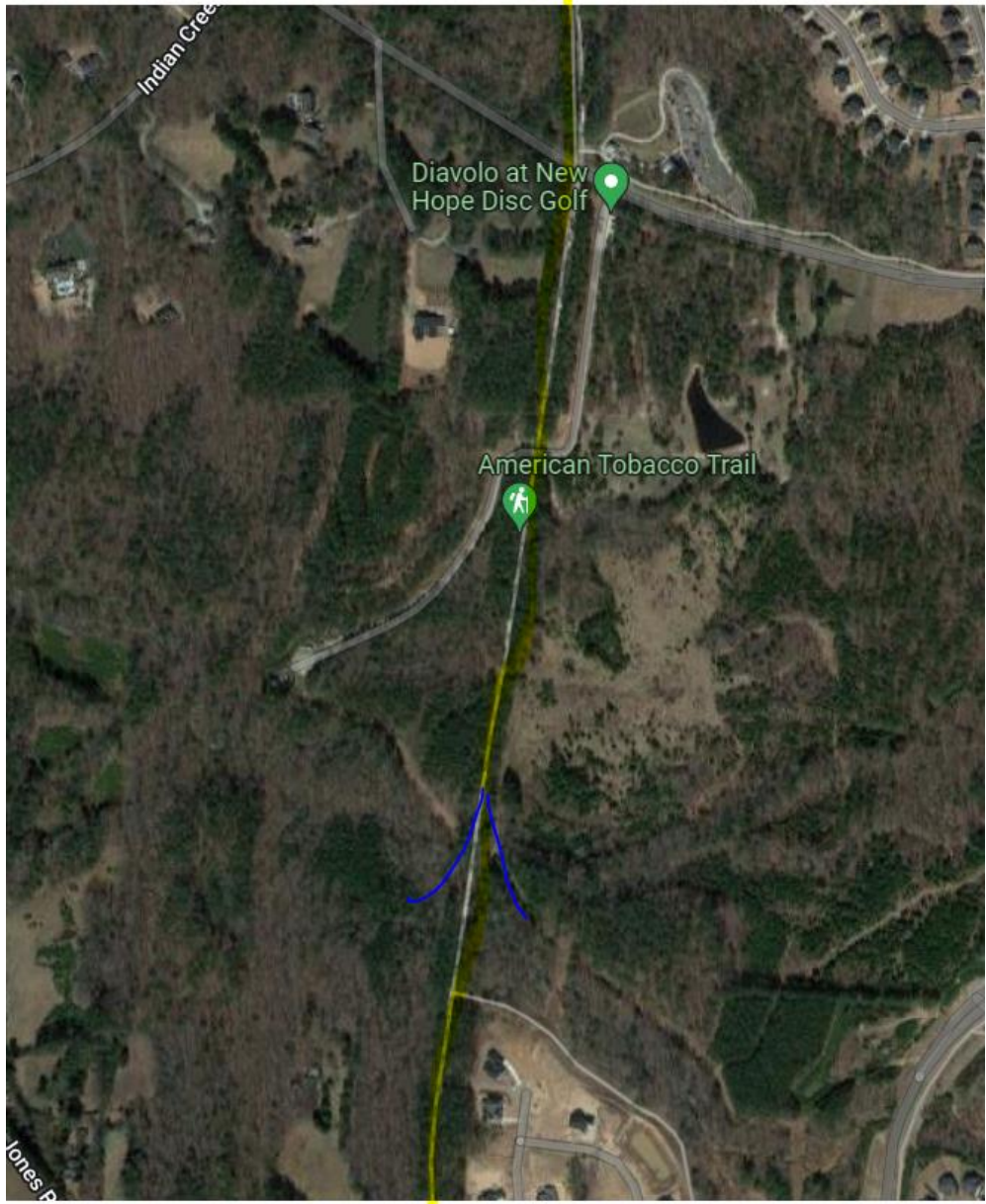
The ride is an out-and-back on the American Tobacco Trail. We will begin and end at the White Oak Church Rd trail entrance in Apex near mile marker 16.5. Parking is at 1305 White Oak Church Rd, Apex NC 27523. We will turn around at half-way, mile **marker 10.25** at Herndon Park in Durham. The total distance is approximately 13 miles on a multi-use variable surface path.

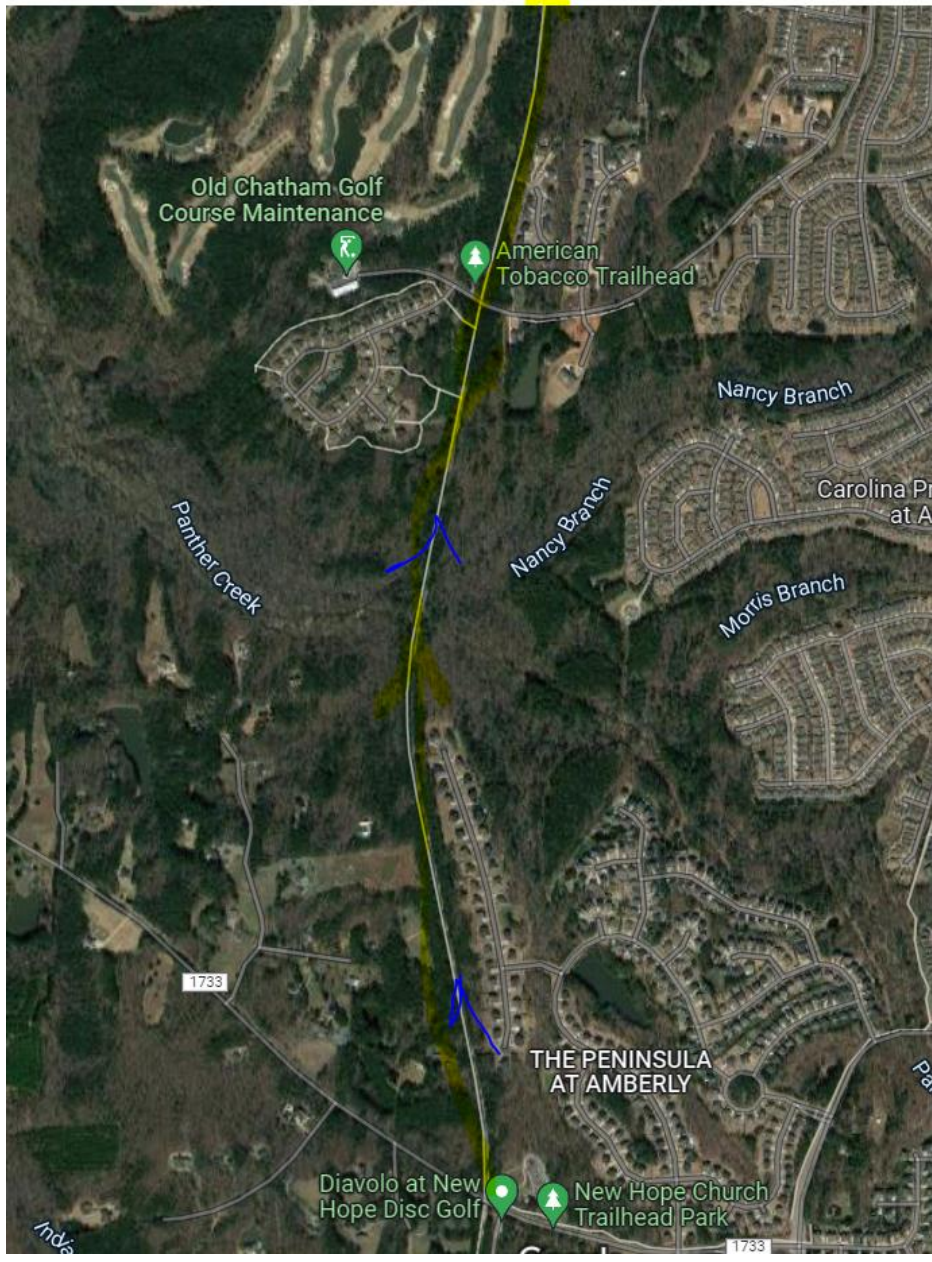
1

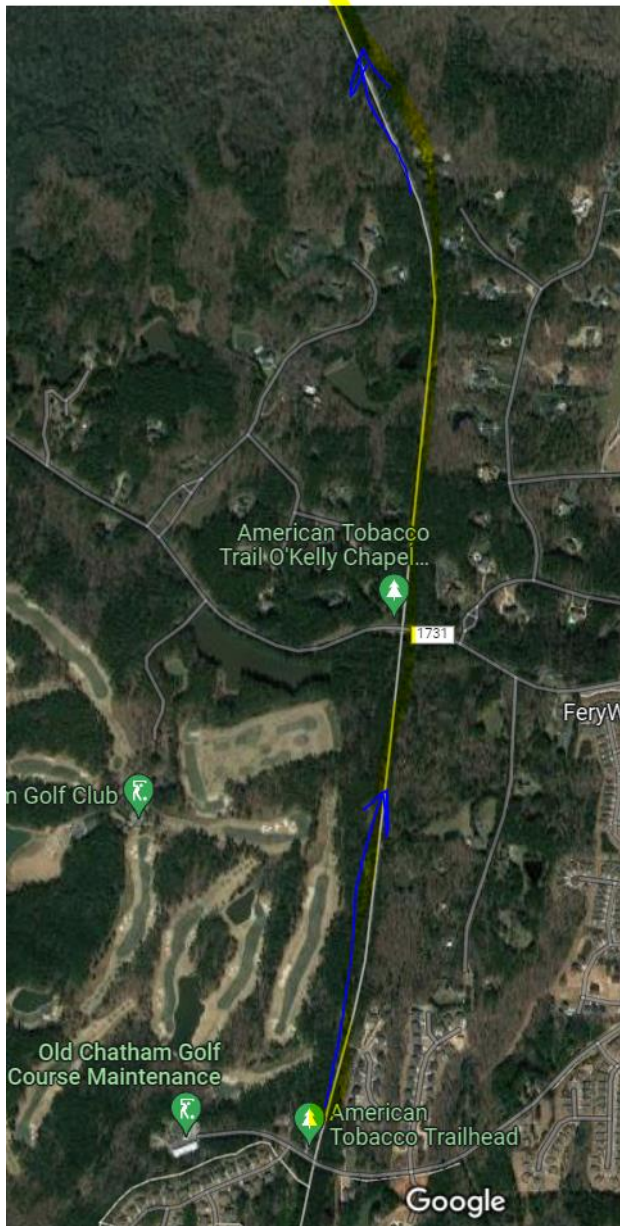


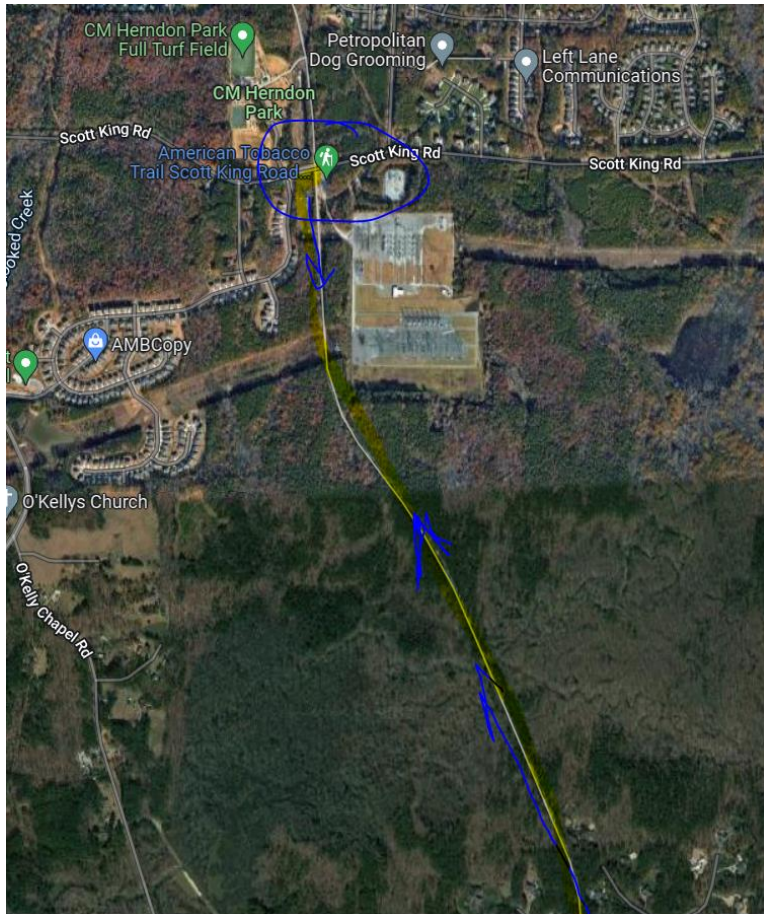












HERNDON PARK/SCOTT KING ROAD ENTRANCE

WHITE OAK ENTRANCE

WIMBERLY ENTRANCE

- Parking
- Handicap parking
- Horse trailer parking
- Bike rack
- Picnic table
- Kiosk
- Trail entrances in Wake County

WHEELS YIELD TO HEELS
 Bicyclists yield to all other trail users
 pedestrians yield to equestrians.

Bicyclists:
 When meeting a horse, stop or reduce your speed and